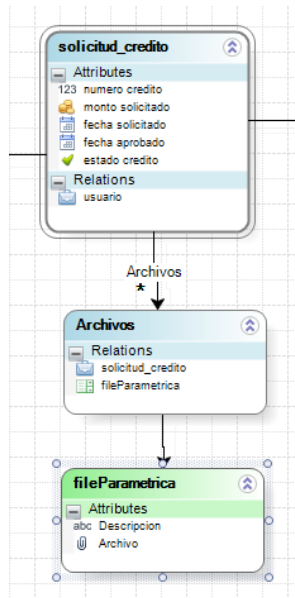


HOW TO SEND EMAILS FROM AN ACTIVITY INCLUDING THE SAME ATTACHMENT FILES

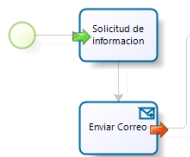
This application is perfect to use when you need to attach many files (always the same) to an activity and then send them by email. In order to optimize the process send an email including the same attachment files, you need to follow-up these steps:

1. Create a Collection relationship to the process entity (One to Many). You need to create a collection entity and then a parametric entity.



Help: http://help.bizagi.com/bpmsuite/en/index.html?relationship_types.htm

2. Modify the process in order to include 2 actions in 2 different activities: One action on enter (Rule) and one action on exit (Email)

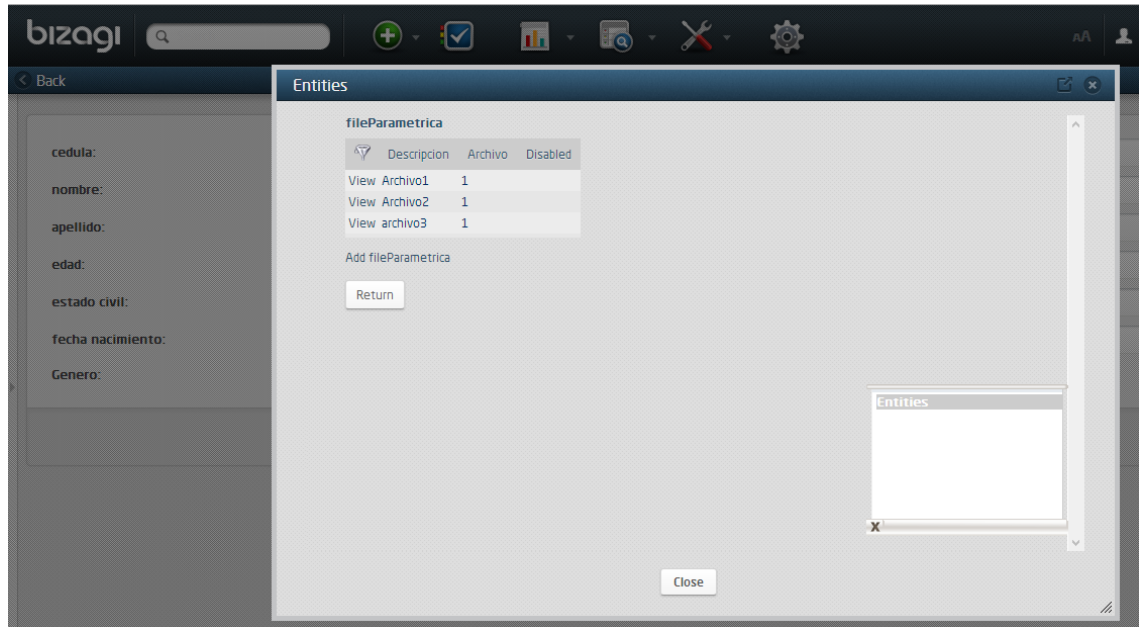


3. Create a rule on enter the activity. You need to declare 2 variables:
Int i=0; Object EntArchivosList=null;

```
EntArchivosList= CEntityManager.GetEntity("fileParametrica").GetEntityList("", "", "", "");  
for(i=0; i< EntArchivosList.Length; i++){  
    var key=EntArchivosList[i].SurrogateKeyValue;  
    var newFile= Me.addRelation("solicitud_credito.Archivos");  
    newFile.setXPath('fileParametrica',key);  
}
```

Help: http://wiki.bizagi.com/en/index.php?title=Other_Rules

4. Create an email in order to attach the files. At the end of the email, you need to add this line: <solicitud_credito.Archivos.fileParametrica.Archivo> in order to attach all the files from the collection.
Help: http://help.bizagi.com/bpmsuite/en/index.html?user_configured_messages.htm
5. Finally, you need to add data to the parametric entity. You can add it from the web application: Admin > Entities > Select the entity



Help:
http://help.bizagi.com/bpmsuite/en/index.html?parameter_entities_values_in_the_w.htm

Note: You need to set up the parameter entity in each environment because when you create a deployment, the files will not send to the new environment.